



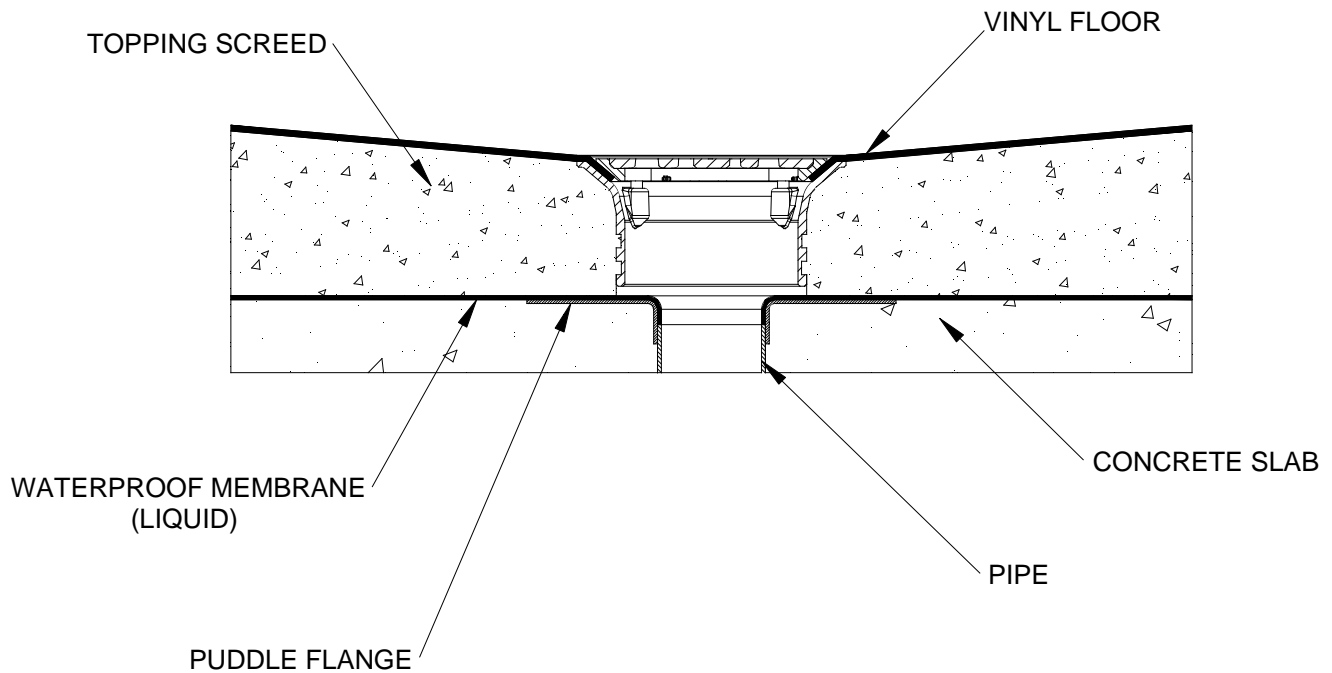
ACO WEXEL - INSTALLATION DRAWING

ACO Polycrete Pty Ltd
Australia
Ph: 1300 765 226
www.acowexel.com.au

DRAWING NO. W-PDF-1

PUSH FIT FLOOR DRAIN INSTALLED IN VINYL FLOOR WITH PUDDLE FLANGE

ACO Limited
New Zealand
Ph: 0800 448 080
www.aconz.com.nz



Please note: These details only provide a practical reference. ACO recommends designers and installers check local legislative standards and practices, or seek specialised engineering advice.

SPECIFICATION CLAUSE

ACO Wexel push-fit floor drain with Heelguard grates for vinyl floor.

Specification

This floor drain shall be ACO Wexel push-fit floor drain with Heelguard grates - [insert type no. or part no.] for vinyl floors.

Materials and design

The grate shall be finished stainless steel with M6 Hex socket screws; load rated to EN 1253 - *Gullies for buildings*; compliant to AS 3996 - *Access covers and grates* (Clause 3.3.5) for surface openings in pedestrian areas; AS 3996 (Clause 3.3.6) for bicycle tyre penetration resistance; ASME A112.6.3 (Section 7.12) compliant, American high heel Standard.

The grate assembly shall have a height adjustable provision to suit the finished floor level with a vinyl clamp with M6 Hex head socket screws to secure vinyl sheet. An optional removable strainer is available for 100mm diameter pipe (part no. 141920).