

## FLOOR DRAIN – Planter drain

Part No.  
141919

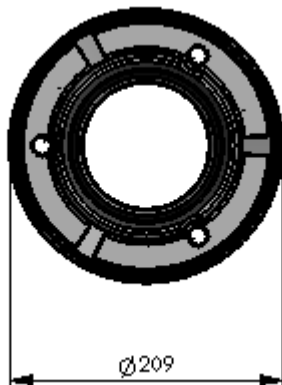
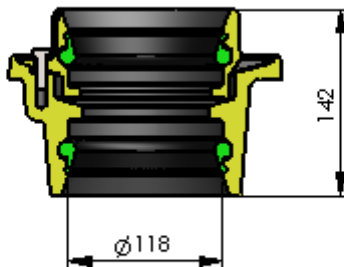
Type S10PB

Planter drain outlet for 100mm inlet PVC pipe and 100mm outlet PVC/HDPE pipe

### Product Features

#### 1. Cast iron body

- Cast iron clamp ring (secured with 3 x M6 Hex head bolts) incorporates weep holes to ensure integrity of rolled waterproof membrane
- Nitrile rubber seal for push-fit connection to suit inlet PVC pipe
- Nitrile rubber seal for push-fit connection to suit outlet PVC and HDPE pipe



Note: All dimensions are in mm



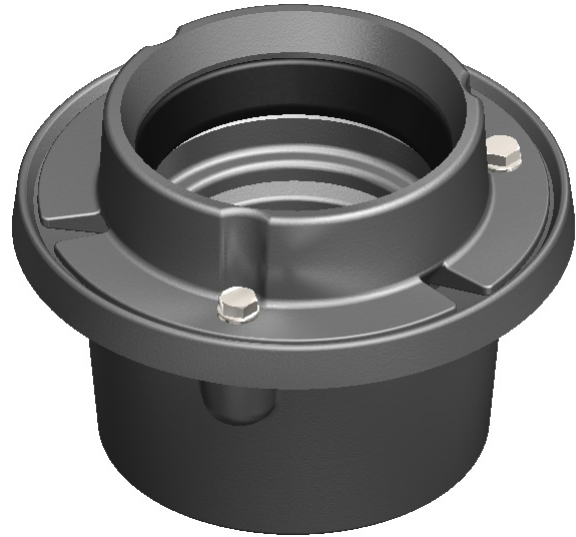
ACO Specification Information

## Specification Clause

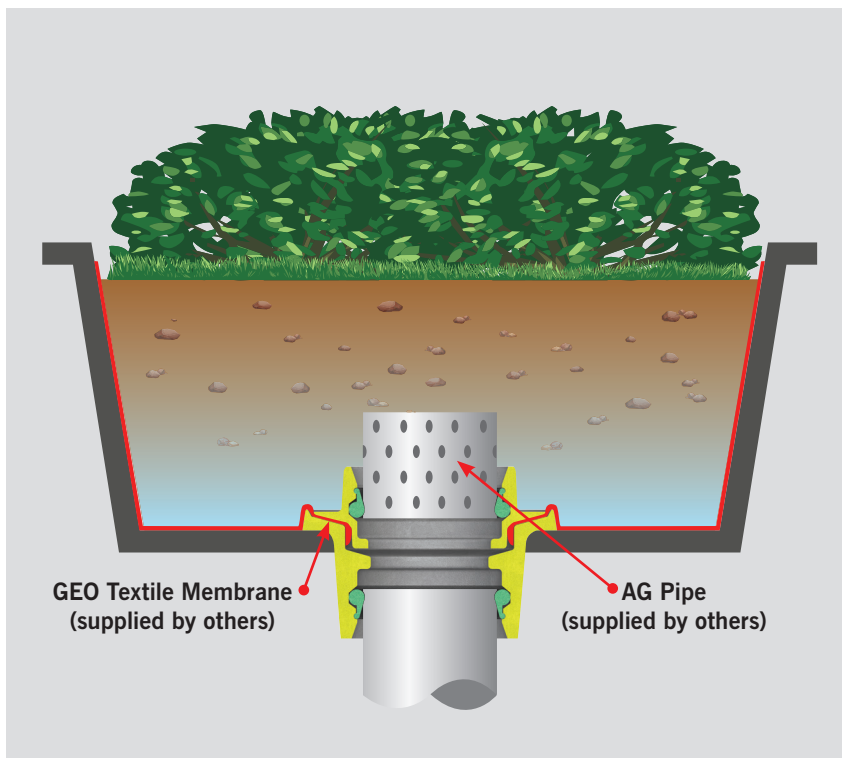
This floor drain shall be ACO Wexel Type S10PB (Part No. 141919). The drain body is to suit 100mm inlet PVC pipe and 100mm outlet PVC/HDPE pipe.

### Materials and Design

The iron body shall have a cast iron membrane clamp ring (secured with 3 x M6 Hex head bolts) incorporating weep holes. For push-fit pipe connection, the body shall have a nitrile rubber seal.



## General Installation Illustration



### Planter drain outlet

Planter drain outlets for planter boxes requiring excess drainage.

**Note:** The illustration is shown for guidance only and shows a typical drain and not necessarily the specific type described on the data sheet.

For downloadable drawings, visit [www.acowexel.com.au](http://www.acowexel.com.au)

### ACO Polycrete Pty Ltd, Australia

Ph: 1300 765 226  
[www.acowexel.com.au](http://www.acowexel.com.au)  
[sales@acoaus.com.au](mailto:sales@acoaus.com.au)

### ACO Limited, New Zealand

Ph: 0800 448 080  
[www.acowexel.co.nz](http://www.acowexel.co.nz)  
[sales@acons.co.nz](mailto:sales@acons.co.nz)

© August, 2014 ACO Polycrete Pty Ltd. All reasonable care has been taken in compiling the information in this document. All recommendations and suggestions on the use of ACO products are made without guarantee since the conditions of use are beyond the control of the company. It is the customer's responsibility to ensure that each product is fit for its intended purpose and that the actual conditions are suitable. ACO Polycrete Pty Ltd. pursues a policy of continuous product development and reserves the right to amend specifications without notice.

