

FLOOR DRAIN – Push-in slip resistant solid top cleanout






Part No.
142112

Type R1510S

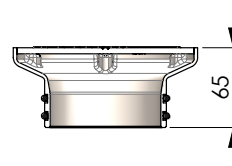
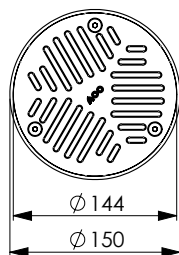
100mm diameter outlet, 150mm diameter solid top cover, to suit concrete, resin and tiled floors

Product Features

Stainless steel slip resistant solid top push-in assembly* with lockable solid top secured with M6 Hex socket screws

-  Load Class L15 (EN 1253), similar to Class A10kN (AS 3996)
-  Slip resistant grate for worker safety
-  AS 3996 (Clause 3.3.5) compliant for surface openings in pedestrian areas
-  AS 1428.2 (Clause 9c) compliant for wheelchair and walking cane safety
-  AS 3996 (Clause 3.3.6) compliant for bicycle tyre penetration resistance

* Nitrile rubber seal to allow push-in joint connection to suit PVC and HDPE pipe.



Note: All dimensions are in mm

ACO Specification Information

Specification Clause

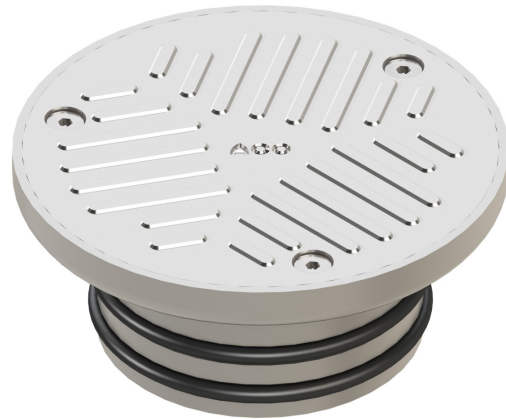
This floor drain – push-in clean-out shall be ACO Wexel Type R1510S (Part No. 142112). The cover shall be 150mm diameter with slip resistant cover.

The drain body is to suit a 100mm diameter vertical outlet with Nitrile rubber seal for push-in connection to either PVC or HDPE pipe (both seals will be supplied).

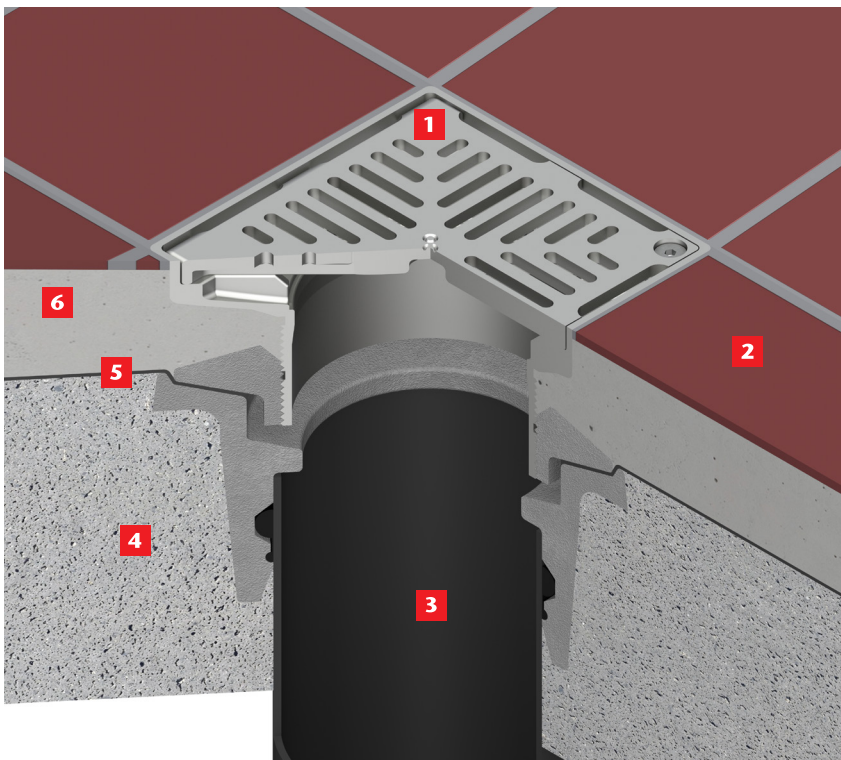
Materials and Design

The cover shall be cast stainless steel, lockable with M6 Hex socket screws.

For strength and pedestrian safety, the cover shall be designed to meet load class L15kN (EN 1253), comply with AS 1428.2 (Clause 9c), AS 3996 (Clause 3.3.5 and 3.3.6) and ASME A112.6.3 (Section 7.12).



General Installation Illustration



Full bodied vertical short floor drain installed in tiled floor

- 1** Floor drain – S10S15 shown
- 2** Glue fixed tile
- 3** Outlet pipe – HDPE or PVC
- 4** Concrete slab
- 5** Waterproof membrane
- 6** Screed/mortar

Note: The illustration is shown for guidance only and shows a typical drain and not necessarily the specific type described on the data sheet.

For downloadable drawings, visit www.acowexel.com.au

ACO Polycrete Pty Ltd, Australia

Ph: 1300 765 226
www.acowexel.com.au
sales@acoaus.com.au

ACO Limited, New Zealand

Ph: 0800 448 080
www.acowexel.co.nz
sales@aconz.co.nz

© August, 2015 ACO Polycrete Pty Ltd. All reasonable care has been taken in compiling the information in this document. All recommendations and suggestions on the use of ACO products are made without guarantee since the conditions of use are beyond the control of the company. It is the customer's responsibility to ensure that each product is fit for its intended purpose and that the actual conditions are suitable. ACO Polycrete Pty Ltd. pursues a policy of continuous product development and reserves the right to amend specifications without notice.

